

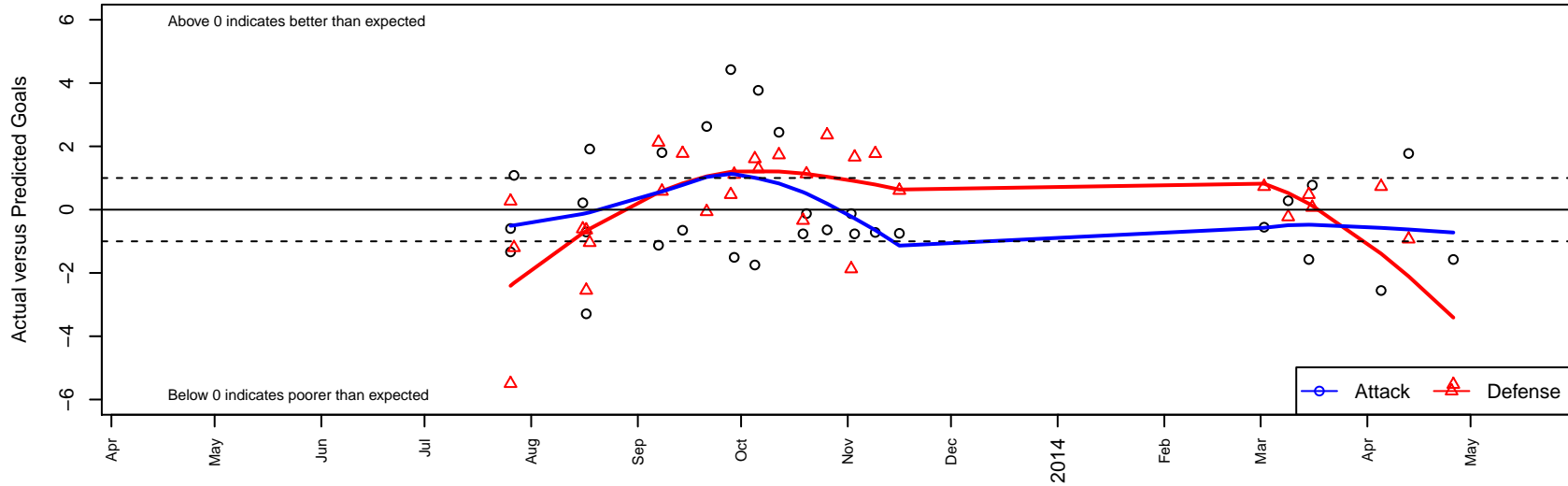
# Aloha United Porto B02

Aloha United  
 Beaverton, OR  
 B02 total strength=408  
 attack=0.37 defense=0.18  
 fall league = OPL First Division U11, OPL Direc  
 alt names used:  
 ALOHA UNITED PORTO (OR)  
 Aloha Porto  
 AUSC Porto

Venues played:  
 Oswego Nike Cup Gold U11  
 Mt Hood Challenge BU11 8v8  
 OPL First Division U11  
 OPL Directors Cup Gold U11  
 Spr OPL Chinook Division U11



**Aloha United Porto B02**  
 Dots are actual minus expected GF (blue circles) and GA (red triangles).  
 Blue line is smoothed change in attack strength. Red is smoothed change in defense strength.



|       | <b>date</b> | <b>home</b>                    |   | <b>away</b>                           |   | <b>venue</b>                 | <b>pred.home</b> | <b>pred.away</b> |
|-------|-------------|--------------------------------|---|---------------------------------------|---|------------------------------|------------------|------------------|
| 26703 | 2014-04-26  | Foothills SC Celtic B02        | 7 | Aloha United Porto B02                | 1 | Spr OPL Chinook Division U11 | 1.48             | 2.57             |
| 26294 | 2014-04-13  | NEU Barca Blue B02             | 2 | Aloha United Porto B02                | 5 | Spr OPL Chinook Division U11 | 1.07             | 3.22             |
| 25604 | 2014-04-05  | Aloha United Porto B02         | 0 | HSC United B02                        | 1 | Spr OPL Chinook Division U11 | 2.55             | 1.73             |
| 24887 | 2014-03-16  | Aloha United Porto B02         | 4 | NEU Barca Blue B02                    | 1 | Spr OPL Chinook Division U11 | 3.22             | 1.07             |
| 24545 | 2014-03-15  | Aloha United Porto B02         | 1 | Foothills SC Celtic B02               | 1 | Spr OPL Chinook Division U11 | 2.57             | 1.48             |
| 24187 | 2014-03-09  | Thelo Spartans B02             | 2 | Aloha United Porto B02                | 2 | Spr OPL Chinook Division U11 | 1.77             | 1.72             |
| 23652 | 2014-03-02  | HSC United B02                 | 1 | Aloha United Porto B02                | 2 | Spr OPL Chinook Division U11 | 1.73             | 2.55             |
| 18353 | 2013-11-16  | Santos FC Mercury B02          | 2 | Aloha United Porto B02                | 1 | OPL Directors Cup Gold U11   | 2.61             | 1.75             |
| 17591 | 2013-11-09  | Aloha United Porto B02         | 1 | Thelo Spartans B02                    | 0 | OPL Directors Cup Gold U11   | 1.72             | 1.77             |
| 17133 | 2013-11-03  | Aloha United Porto B02         | 1 | Capital FC Timbers Black –was Red B02 | 1 | OPL Directors Cup Gold U11   | 1.76             | 2.66             |
| 16579 | 2013-11-02  | THUSC Beryllium Black B02      | 5 | Aloha United Porto B02                | 1 | OPL Directors Cup Gold U11   | 3.13             | 1.12             |
| 15697 | 2013-10-26  | Aloha United Porto B02         | 1 | Bend FC Timbers Red B02               | 0 | OPL First Division U11       | 1.64             | 2.36             |
| 15241 | 2013-10-20  | Aloha United Porto B02         | 1 | THUSC Beryllium Black B02             | 2 | OPL First Division U11       | 1.12             | 3.13             |
| 14760 | 2013-10-19  | Aloha United Porto B02         | 1 | Capital FC Timbers Black –was Red B02 | 3 | OPL First Division U11       | 1.76             | 2.66             |
| 13715 | 2013-10-12  | HSC United B02                 | 0 | Aloha United Porto B02                | 5 | OPL First Division U11       | 1.73             | 2.55             |
| 13207 | 2013-10-06  | BSC Portland Gold B02          | 0 | Aloha United Porto B02                | 7 | OPL First Division U11       | 1.29             | 3.23             |
| 12666 | 2013-10-05  | Santos FC Mercury B02          | 1 | Aloha United Porto B02                | 0 | OPL First Division U11       | 2.61             | 1.75             |
| 12249 | 2013-09-29  | Aloha United Porto B02         | 0 | PCU Red B02                           | 1 | OPL First Division U11       | 1.51             | 2.11             |
| 11768 | 2013-09-28  | Aloha United Porto B02         | 7 | Foothills SC Celtic B02               | 1 | OPL First Division U11       | 2.57             | 1.48             |
| 10795 | 2013-09-21  | Washington Timbers Forrest B02 | 2 | Aloha United Porto B02                | 4 | OPL First Division U11       | 1.94             | 1.37             |
| 9820  | 2013-09-14  | Aloha United Porto B02         | 1 | River Plate SC Tiburones B02          | 2 | OPL First Division U11       | 1.65             | 3.78             |
| 9401  | 2013-09-08  | Aloha United Porto B02         | 6 | Southside SC Chaos B02                | 0 | OPL First Division U11       | 4.20             | 0.58             |
| 8880  | 2013-09-07  | THUSC Beryllium Black B02      | 1 | Aloha United Porto B02                | 0 | OPL First Division U11       | 3.13             | 1.12             |
| 7378  | 2013-08-18  | TFA Barcelona OR B02           | 3 | Aloha United Porto B02                | 5 | Mt Hood Challenge BU11 8v8   | 1.96             | 3.08             |
| 6953  | 2013-08-17  | RVSC Timbers Red B02           | 3 | Aloha United Porto B02                | 3 | Mt Hood Challenge BU11 8v8   | 2.36             | 3.71             |
| 6973  | 2013-08-17  | United SA Warriors B02         | 5 | Aloha United Porto B02                | 0 | Mt Hood Challenge BU11 8v8   | 2.45             | 3.29             |
| 6747  | 2013-08-16  | Aloha United Porto B02         | 1 | Boise Nationals Bayern Black B02      | 7 | Mt Hood Challenge BU11 8v8   | 0.79             | 6.39             |
| 4638  | 2013-07-27  | Aloha United Porto B02         | 2 | Southside SC Revolution B02           | 5 | Oswego Nike Cup Gold U11     | 0.92             | 3.80             |

|             | <b>date</b> | <b>home</b>            |   | <b>away</b>                   |   | <b>venue</b>             | <b>pred.home</b> | <b>pred.away</b> |
|-------------|-------------|------------------------|---|-------------------------------|---|--------------------------|------------------|------------------|
| <i>4491</i> | 2013-07-26  | Aloha United Porto B02 | 2 | FC Salmon Creek Avalanche B02 | 2 | Oswego Nike Cup Gold U11 | 2.60             | 2.27             |
| <i>4492</i> | 2013-07-26  | Aloha United Porto B02 | 0 | Washington Timbers Green B02  | 8 | Oswego Nike Cup Gold U11 | 1.33             | 2.50             |